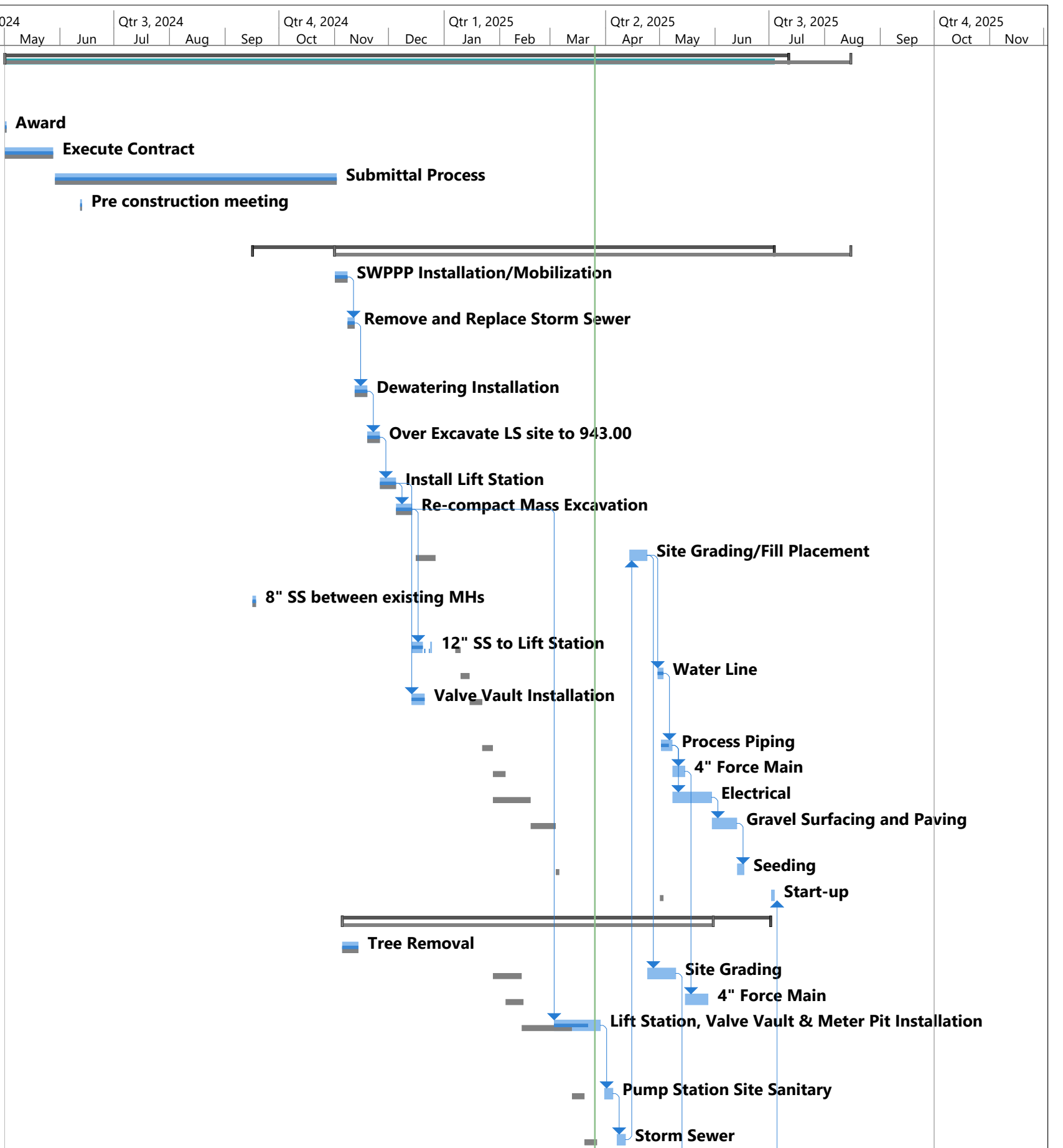


ID	Task Mode	Task Name	Duration	Start	Finish	Predecessors	Qtr 2, 2024			Qtr 3, 2024			Qtr 4, 2024			Qtr 1, 2025			Qtr 2, 2025			Qtr 3, 2025			Qtr 4, 2025	
							Apr	May	Jun	Jul	Aug	Sep	Oct	Nov	Dec	Jan	Feb	Mar	Apr	May	Jun	Jul	Aug	Sep	Oct	Nov
1	🚀	New Wastewater Treatment Plant Contract 4-LS & FM	306 days?	Wed 5/1/24	Fri 7/11/25																					
2	➡	Award	1 day?	Wed 5/1/24	Wed 5/1/24																					
3	➡	Execute Contract	19 days	Wed 5/1/24	Mon 5/27/24																					
4	➡	Submittal Process	111 days?	Wed 5/29/24	Fri 11/1/24																					
5	➡	Pre construction meeting	1 day?	Wed 6/12/24	Wed 6/12/24																					
6	➡	River Road	205 days	Mon 9/16/24	Thu 7/3/25																					
7	➡	SWPPP Installation/Mobilizati	5 days	Fri 11/1/24	Thu 11/7/24																					
8	➡	Remove and Replace Storm Sewer	2 days	Fri 11/8/24	Mon 11/11/24	7																				
9	➡	Dewatering Installation	5 days	Tue 11/12/24	Mon 11/18/24	8																				
10	➡	Over Excavate LS site to 943.00	5 days	Tue 11/19/24	Mon 11/25/24	9																				
11	➡	Install Lift Station	6 days	Tue 11/26/24	Wed 12/4/24	10																				
12	➡	Re-compact Mass Excavation	7 days	Thu 12/5/24	Fri 12/13/24	11																				
13	➡	Site Grading/Fill Placement	8 days	Mon 4/14/25	Wed 4/23/25	30																				
14	➡	8" SS between existing MHs	2 days	Mon 9/16/24	Tue 9/17/24																					
15	➡	12" SS to Lift Station	5 days	Sat 12/14/24	Tue 12/24/24	12																				
16	➡	Water Line	3 days	Wed 4/30/25	Fri 5/2/25	13																				
17	➡	Valve Vault Installation	5 days	Sat 12/14/24	Fri 12/20/24	11																				
18	➡	Process Piping	4 days	Fri 5/2/25	Wed 5/7/25	16																				
19	➡	4" Force Main	5 days	Thu 5/8/25	Wed 5/14/25	18																				
20	➡	Electrical	15 days	Thu 5/8/25	Thu 5/29/25	18																				
21	➡	Gravel Surfacing and Paving	10 days	Fri 5/30/25	Thu 6/12/25	20																				
22	➡	Seeding	2 days	Fri 6/13/25	Mon 6/16/25	21																				
23	➡	Start-up	2 days	Wed 7/2/25	Thu 7/3/25	40																				
24	➡	On The Green	167 days	Tue 11/5/24	Tue 7/1/25																					
25	➡	Tree Removal	7 days	Tue 11/5/24	Wed 11/13/24																					
26	➡	Site Grading	12 days	Thu 4/24/25	Fri 5/9/25	13																				
27	➡	4" Force Main	8 days	Thu 5/15/25	Tue 5/27/25	19																				
28	➡	Lift Station, Valve Vault & Meter Pit Installation	20 days	Mon 3/3/25	Fri 3/28/25	12																				
29	➡	Pump Station Site Sanitary	5 days	Mon 3/31/25	Fri 4/4/25	28																				
30	➡	Storm Sewer	5 days	Mon 4/7/25	Fri 4/11/25	29																				



ID	Task Mode	Task Name	Duration	Start	Finish	Predecessors	Qtr 2, 2024			Qtr 3, 2024			Qtr 4, 2024			Qtr 1, 2025			Qtr 2, 2025			Qtr 3, 2025			Qtr 4, 2025	
							Apr	May	Jun	Jul	Aug	Sep	Oct	Nov	Dec	Jan	Feb	Mar	Apr	May	Jun	Jul	Aug	Sep	Oct	Nov
31	→	Water Line	3 days	Mon 5/12/25	Wed 5/14/25	26																				
32	→	Process Piping	6 days	Thu 5/15/25	Thu 5/22/25	31																				
33	→	Electrical	15 days	Thu 5/15/25	Thu 6/5/25	31																				
34	→	Ave G Sanitary	8 days	Fri 5/23/25	Wed 6/4/25	32																				
35	→	Ave G Concrete Replacement	2 days	Thu 6/5/25	Fri 6/6/25	34																				
36	→	Retaining Wall	10 days	Thu 6/5/25	Wed 6/18/25	34																				
37	→	Subdrains	2 days	Thu 6/5/25	Fri 6/6/25	34																				
38	→	Paving	10 days	Mon 6/9/25	Fri 6/20/25	37																				
39	→	Seeding & Lanscape Replacement	5 days	Mon 6/23/25	Fri 6/27/25	38																				
40	→	Start-up	2 days	Mon 6/30/25	Tue 7/1/25	39																				
41	→	Substantial Completion	0 days	Fri 7/25/25	Fri 7/25/25																					
42	→	Final Completion	0 days	Tue 9/30/25	Tue 9/30/25																					

